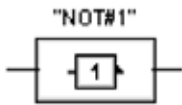


ACTIVATING THE SIMON+ “NOT” FUNCTION

How to activate the NOT function block in the SIMON+ safety configuration software tool



By default, the logical NOT function block has been disabled. This is done since a NOT function, if used improperly, has the potential of creating dangerously unsafe situations. On the other hand, using the NOT function in diagnostics-related configuration logic opens up many new possibilities. For instance, by using the NOT function block, it is easy to determine if an e-stop that requires a reset has been released and is ready to accept that reset. If the result of a NOT operation is used only to annunciate the “ready to be reset” state, the NOT function is not influencing the safe output states and, therefore, has no negative effect on the safety system.



Users who wish to enable the NOT function block must make a simple modification using the Windows Registry Editor. The change involves adding a new entry (at no point will an existing registration entry be modified) that can always be undone. Still, users must be careful when adding the entry. **Users perform these changes at their own risk.**

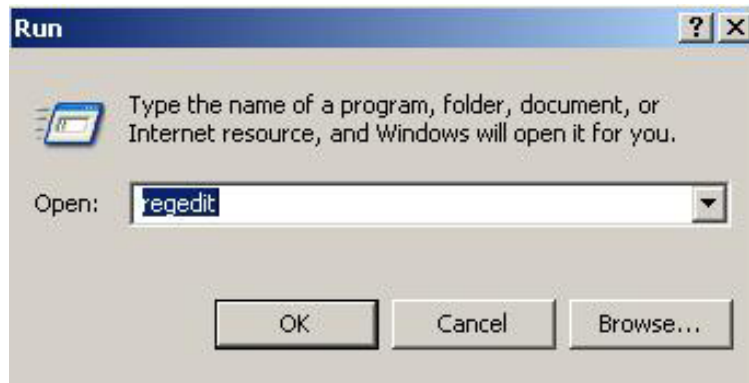


Users are also advised that the NOT function has the ability to create harmful situations when used in the safety logic that controls a safe output that in turn controls a motor starter or other potentially harmful operation. **Users will utilize the NOT function at their own risk.**

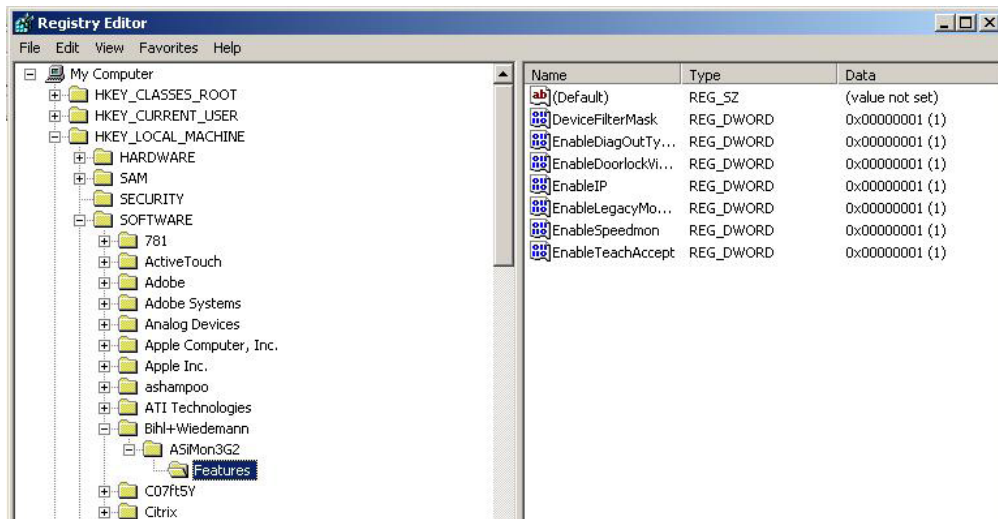


ACTIVATING THE SIMON+ “NOT” FUNCTION

1. Run the Windows Registration Editor

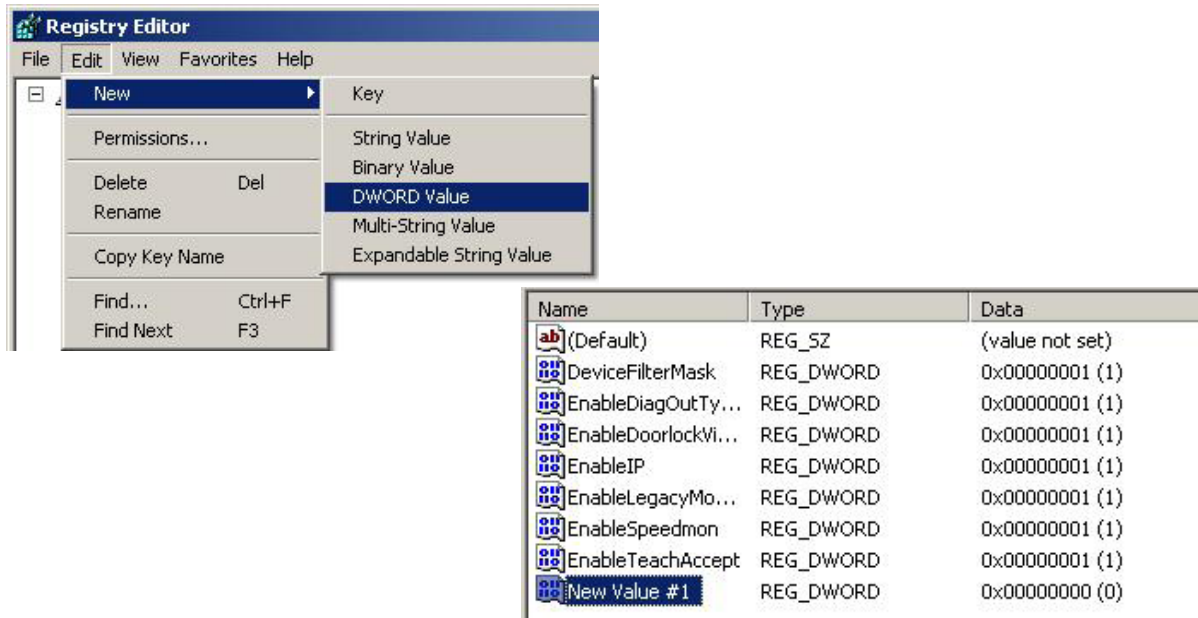


2. Open HKEY_LOCAL_MACHINE | SOFTWARE | Bihl+Wiedemann | ASiMon2G2 | Features

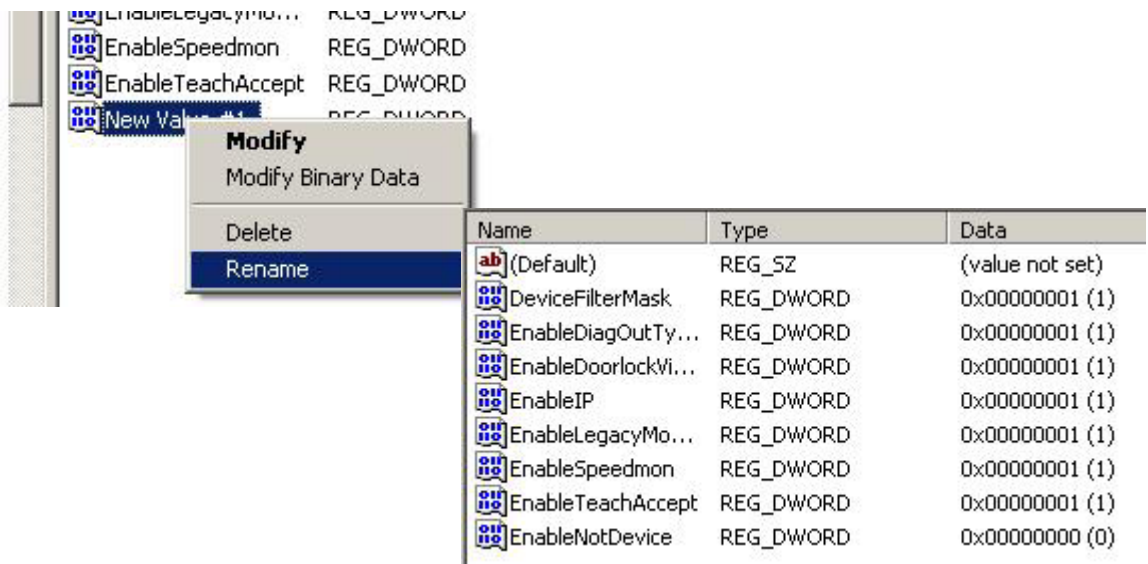


ACTIVATING THE SIMON+ “NOT” FUNCTION

3. Add a new DWORD Value

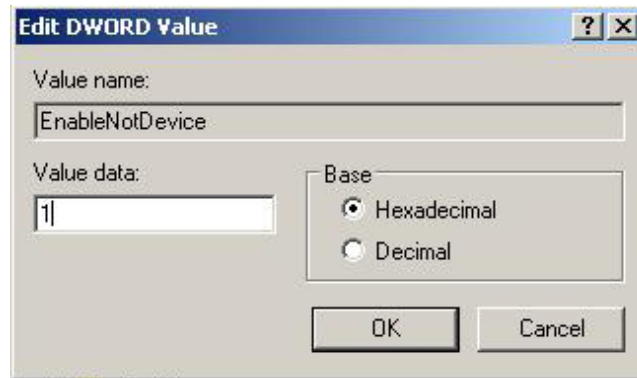


4. Right click the new entry and select Rename. This allows you to overwrite the current name “New Value #1” to “EnableNotDevice”.



ACTIVATING THE SIMON+ “NOT” FUNCTION

5. Double click the “EnableNotDevice” entry to open its edit window. Set the Value data to 1 and click “OK.” Then close the Registration Editor.



6. The next time the SIMOM+ configuration software is started, the NOT function is available in the “Logic devices” of the “Device library.”

