



# PosiTrack PXV Read Head

- **2-D Data Matrix camera**
- **Absolute position feedback over distances to 6 miles**
- **0.1 mm resolution**
- **25 mph (41 ft/s) maximum read speed**
- **RS-485, PROFINET, PROFIBUS, SSI, CANopen, EtherNet/IP models**
- **Network interfaces available for DeviceNet and EtherNet/IP protocol**



# PosiTrack PXV Read Head

- **Vertical and horizontal position feedback**
- **Follows straight or curved travel paths**
- **Fast installation—minimal mounting hardware**
- **3 PNP switch outputs**
- **Configurable via PC, push button or code cards**



# PosiTrack PXV Read Head

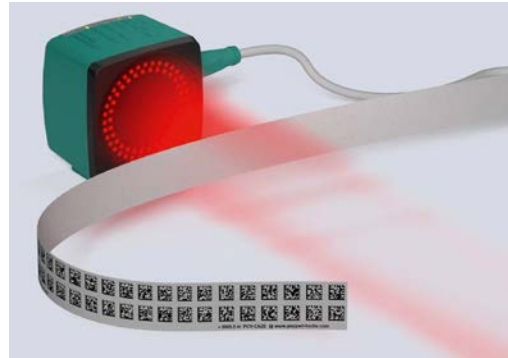
## Sensing Ranges

PCV50 scan distance: 50 mm (+/- 25mm)

PCV80 scan distance: 80 mm (+/- 15 mm)

PCV100 scan distance: 100 mm (+/- 20 mm)

PCV100-6011 scan distance: 100 mm (+/- 40 mm)





# PosiTrack PXV Read Head

- Automated storage and retrieval systems
- Overhead material handling
- Floor conveyors
- Lifts
- Rotary turntables
- Stage lighting control

