



# F260 Series

- **35 ft (10.6 meter) sensing range**
- **12-bit resolution**
- **Software-programmable sensing limits and filtering**
- **Terminal compartment connectivity**
- **Output options include:**
  - Analog current + dual switch point**
  - Analog voltage + dual switch point**

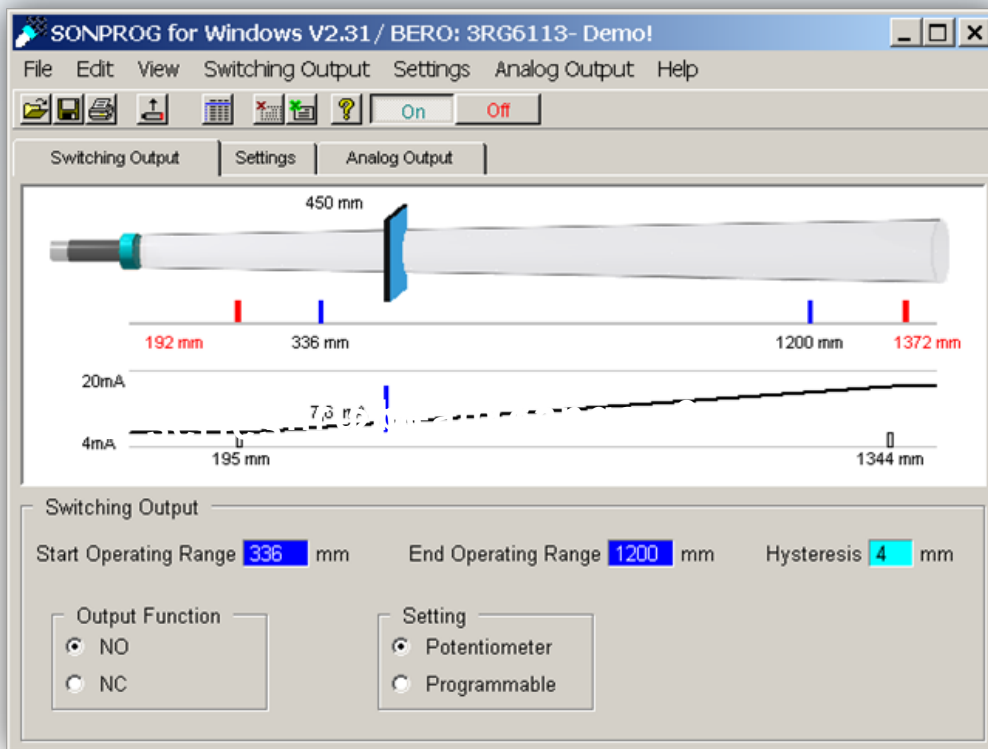




# F260 Series

## Sensing Ranges

F260: 800 mm ... 10 m



All parameters set via  
SONPROG software





# F260 Series

- **Overhead crane position feedback**
- **Long-range level control**
- **Sensing in dusty/dirty environments**

