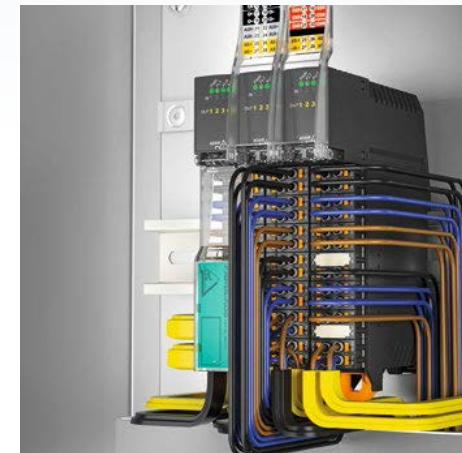




# Enclosure-Mounted Applications KE5 Modules

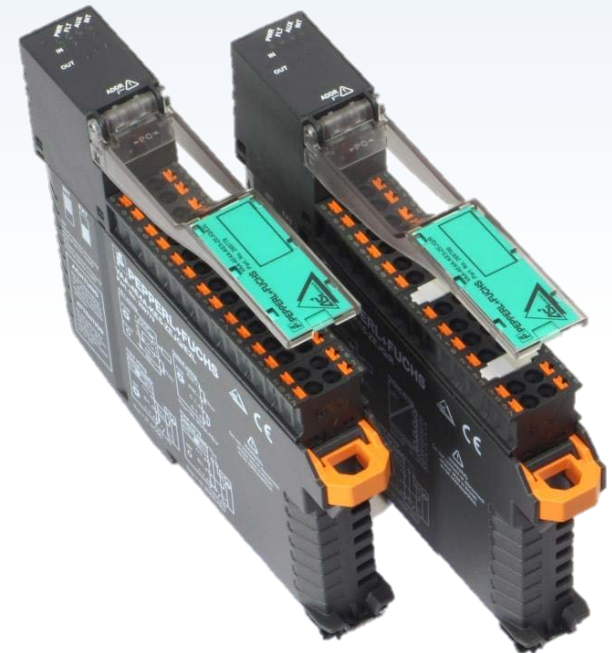
- Compact housing for up to 50 % space savings
- Front push-in connector simplifies installation
- LED back-illuminated input/output channels, including channel-specific overload indication





# Enclosure-Mounted Applications KE5 Modules (Discrete)

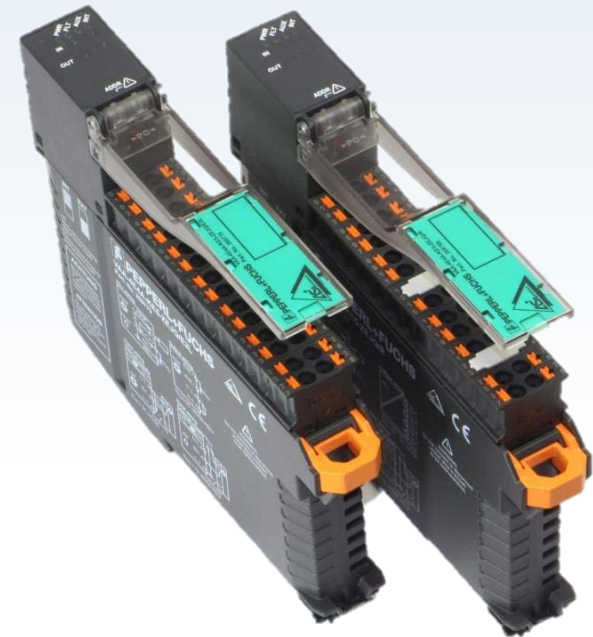
- Available with electronic outputs or relay outputs
- Available with 4 inputs for 3-wire sensors
- Available with 4 outputs
  - 4 relay outputs (2 A / 30 VDC); (2 A / 250 VAC)
  - 4 electronic outputs, PNP, overload and short-circuit proof





# Enclosure-Mounted Applications KE5 Modules (Analog)

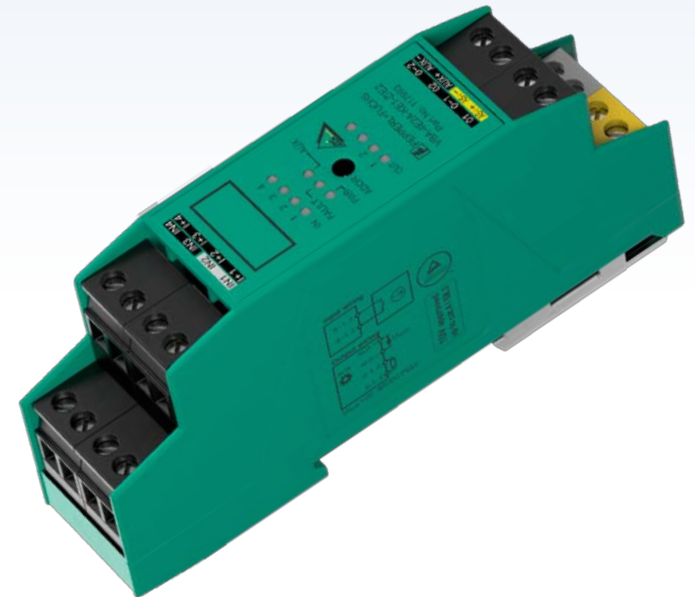
- Available with 4 analog inputs
  - Current: 0 ... 20 mA
  - Current: 4 ... 20 mA
- Available with 2 analog inputs
  - Current: 0 ... 20 mA / 4 ... 20 mA
  - Voltage: 0 ... 10 V
- Available with 2 analog outputs
  - Current: 0 ... 20 mA
  - Voltage: 0 V ... 10 V
- Available with 4 analog outputs
  - Current: 0 ... 20 mA
  - Voltage: 0 ... 10 V





# Enclosure-Mounted Applications KE1 Modules

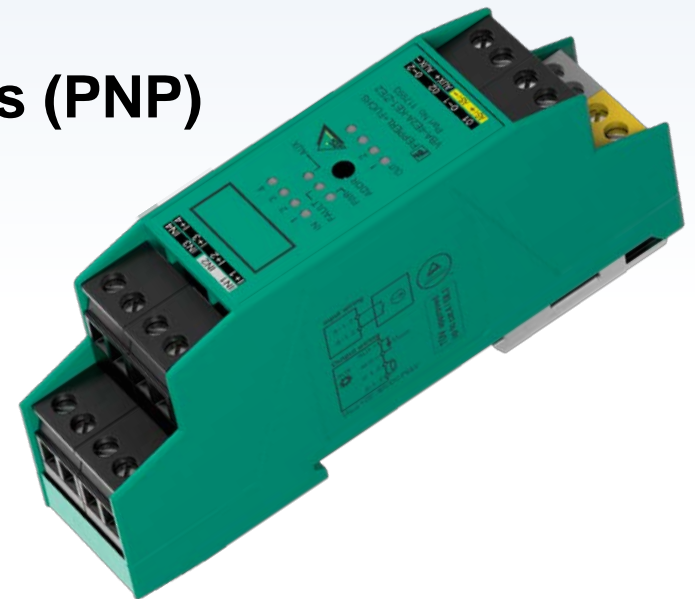
- Easy mounting by snapping onto DIN rail
- LEDs on front control plate display current switching state for each input
- Cage tension spring terminals





# Enclosure-Mounted Applications KE1 Modules

- **Modules with up to 4 inputs / 4 outputs**
- **Safety modules approved for USA, Canada, and Mexico**
- **Suitable for any 2-, 3-wire sensors (PNP)**





# Enclosure-Mounted Applications KE3 Modules

- Occupies one full address for the safe output and one A/B address for the 4 inputs
- 1 safety-related electronic output, 4 standard inputs, 2 standard outputs
- No longer requires parallel wiring of safe actuators in the field

# Enclosure-Mounted Applications CB10 Modules



- **Small footprint with 36 x 39.5 mm**
- **Minimum height of housing below 10 mm**
- **Direct connection using flying leads with 200 mm length**
- **Color-coded leads for trouble-free installation**
- **Clear indication of functions by print marking near the leads**







# Enclosure-Mounted Applications CB10 Modules

- **Integration into push button boxes**
  - Any box can be used
  - Any dry contact push button can be integrated
- **Minimum wiring effort leading to less installation time**

